

# ***Laufenn***

Journey in Style

***Laufenn***

Fawsley Drive, Heartlands Business Park, Daventry,  
Northamptonshire, NN11 8UG, UK.  
[www.laufenn.com/uk](http://www.laufenn.com/uk)  
Tel: +44(0)1327 304100 / Fax: +44(0)1327 304110

**Product Catalogue**

---

# Contents

<b>Laufenn Is</b>	<b>4</b>
<b>Available Sizes</b>	<b>6</b>
<b>S FIT EQ</b>	<b>8</b>
<b>G FIT EQ</b>	<b>14</b>
<b>X FIT VAN</b>	<b>18</b>
<b>X FIT HT</b>	<b>22</b>
<b>I FIT</b>	<b>26</b>
<b>I FIT VAN</b>	<b>30</b>
<b>Laufenn Technology</b>	<b>34</b>
<b>Useful Information</b>	<b>42</b>

# Laufenn Is

Produced by a leading tyre manufacturer, Laufenn delivers quality tyres at affordable prices, allowing you to buy with confidence.



An exceptionally comfortable and smooth driving experience through optimised performance in any weather or season.

Durable and reliable, with an impressive performance on a wide range of road conditions you'll encounter regularly in your everyday life.

---

## Confident

The durability Laufenn provides is rooted in its uncompromising commitment to quality. When you go to work or head out to meet your friends... When you go on a trip or venture out to a new place... Laufenn is a reliable tyre range providing optimised performance and confidence.

---

## Simple

Laufenn is simple with no add-ons and nothing to spoil your driving experience. Committed to the basics, Laufenn offers a pure driving experience tailored to your needs.

---

## Value

Laufenn provides value, durability and quality tyres which adapt to the different road conditions you are faced with everyday.

---

## Sensible

Laufenn understands your need for reliability every single day, without compromising on affordability, performance, style or ride comfort.

# Available Sizes

## S FIT EQ

	Size	LI and SS
<b>35</b>	225/35R19 XL	88Y
	235/35R19 XL	91Y
	255/35R18 XL	94Y
	245/35R19 XL	93Y
	245/35R20 XL	95Y
	255/35R19 XL	96Y
	255/35R20 XL	97Y
<b>40</b>	265/35R18 XL	97Y
	205/40R17 XL	84W
	215/40R17 XL	87W
	245/40R17 XL	95Y
	225/40R18 XL	92Y
	235/40R18 XL	95Y
	235/40R19 XL	96Y
	245/40R18 XL	97Y
	245/40R19 XL	98Y
	255/40R19 XL	100Y
<b>45</b>	195/45R15	78V
	195/45R16 XL	84V
	205/45R16	83V
	205/45R16	83W
	205/45R17 XL	88W
	215/45R17 XL	91Y
	225/45R17 XL	94Y
	225/45R18 XL	95Y
	235/45R17 XL	97Y
	235/45R18 XL	98Y
	245/45R17 XL	99Y
	245/45R18 XL	100Y
	245/45R19 XL	102Y
<b>50</b>	185/50R16	81V
	195/50R15	82H
	195/50R15	82V
	195/50R16	84V
	205/50R16	87V
	205/50R16	87W
	205/50R17 XL	93W
	215/50R17 XL	95W
	225/50R17 XL	98Y
	225/50R17 XL	98Y
<b>55</b>	185/55R15	82H
	185/55R15	82V
	185/55R16	83V
	195/55R15	85H
	195/55R15	85V
	195/55R16	87H
	195/55R16	87V
	205/55R16	91H
	205/55R16	91V
	205/55R16 XL	94V
	205/55R16	91W
	215/55R16 XL	97H
	215/55R16	93V
	215/55R16 XL	97W
	205/55R17 XL	95W
<b>60</b>	215/55R17 XL	98W
	215/55R18 XL	99V
	225/55R16	95V
	225/55R16 XL	99W
	225/55R17 XL	101W
	195/60R15	88H
	195/60R15	88V
	205/60R15	91H
	205/60R15	91V
	205/60R16	92V
	205/60R16 XL	96V
	215/60R16 XL	99H
215/60R16 XL	99V	
<b>65</b>	195/65R15	91V
	205/65R15	94H
	205/65R15	94H

## S FIT EQ Runflat

	Size	LI and SS
<b>40</b>	255/40R18	95W
	225/45R17	91W
<b>45</b>	225/45R18 XL	95W
	245/45R18	96W
<b>50</b>	225/50R17	94W
	245/50R18	100W
<b>55</b>	225/55R16	95W
	225/55R17	97W

## S FIT EQ SUV

	Size	LI and SS
<b>40</b>	275/40R20 XL	106Y
	255/45R18 XL	103Y
	255/45R20 XL	105W
<b>45</b>	275/45R20 XL	110Y
	235/50R18	97V
	235/50R19	99V
<b>50</b>	255/50R19 XL	107W
	225/55R18	98V
	235/55R17 XL	103W
<b>55</b>	235/55R18	100V
	235/55R19 XL	105W
	255/55R18 XL	109W
<b>60</b>	255/55R19 XL	111W
	225/60R17	99H
	225/60R18	100H
<b>65</b>	235/60R18 XL	107V
	235/65R17 XL	108V
	255/65R17	110H
<b>70</b>	215/70R16	100V
	225/70R16	103V
	245/70R16 XL	111H

## S FIT EQ SUV Runflat

	Size	LI and SS
<b>50</b>	255/50R19 XL	107W

## G FIT EQ

	Size	LI and SS
<b>55</b>	185/55R14	80H
	165/60R14	75T
	165/60R14	75H
<b>60</b>	175/60R15	81H
	185/60R14	82H
	185/60R15	84H
	185/60R15 XL	88H
	155/65R13	73T
	155/65R14	75T
	165/65R13	77T
	165/65R14	79T
	165/65R15	81H
	175/65R13	80T
	175/65R14	82T
	175/65R14 XL	86T
<b>65</b>	175/65R14	82H
	175/65R15	84T
	175/65R15	84H
	185/65R14	86T
	185/65R14	86H
	185/65R15	88T

	Size	LI and SS
<b>70</b>	185/65R15	88H
	195/65R15	91T
	195/65R15 XL	95T
	195/65R15	91H
	155/70R13	75T
	165/70R13	79T
	165/70R14	81T
	165/70R14 XL	85T
	175/70R13	82T
	175/70R14	84T
	175/70R14 XL	88T
	185/70R14	88T
<b>80</b>	195/70R14	91T
	205/70R15	96T
	145/80R13 XL	79T
	155/80R13	79T
	165/80R13	83T
	175/80R14	88T

## G FIT EQ SUV

	Size	LI and SS
<b>60</b>	215/60R17	96H
	235/60R16	100H
<b>65</b>	215/65R16	98H
	225/65R17	102H

## X FIT Van

	Size	LI and SS
<b>60</b>	195/60R16	99/97H
	215/60R16	103/101T
	175/65R14	90/88T
<b>65</b>	195/65R16	104/102R
	205/65R15	102/100T
	205/65R16	107/105T
	215/65R16	109/107T
	225/65R16	112/110R
	235/65R16	115/113R
	165/70R14	89/87R
	195/70R15	104/102R
	205/70R15	106/104R
	215/70R15	109/107S
<b>70</b>	225/70R15	112/110S
	185/75R16	104/102R
	195/75R16	107/105R
	205/75R16	113/111R
	215/75R16	116/114R
	225/75R16	121/120R
<b>82</b>	185R14	102/100R
	195R14	106/104R

## X FIT HT SUV

	Size	LI and SS
<b>40</b>	255/40R18	95W
	225/45R17	91W
<b>45</b>	225/45R18 XL	95W
	245/45R18	96W
<b>50</b>	225/50R17	94W
	245/50R18	100W
	225/55R16	95W
<b>55</b>	225/55R17	97W

## F FIT

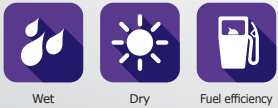
	Size	LI and SS
<b>40</b>	225/40R18 XL	92V
	245/40R18 XL	97V
<b>45</b>	225/45R17	91H
	225/45R17 XL	94V
	225/45R18 XL	95V
	235/45R18 XL	98V
	245/45R18 XL	100V
<b>50</b>	195/50R15	82H
	205/50R17 XL	93V
	215/50R17 XL	95V
	225/50R17 XL	98H
	225/50R17 XL	98V
	185/55R15	82T
<b>55</b>	195/55R15	85H
	195/55R16	87H
	205/55R16	91T
	205/55R16	91H
	205/55R16 XL	94H
<b>60</b>	215/55R16	93H
	215/55R16 XL	97H
	215/55R17 XL	98V
	225/55R16	95H
	225/55R16 XL	99H
	225/55R17 XL	101V
	185/60R14	82T
	185/60R15	84T
	185/60R15 XL	88T
	195/60R15	88T
<b>65</b>	205/60R16	92H
	205/60R16 XL	96H
	215/60R16 XL	99H
	225/60R16	98H
	235/60R18 XL	107H
	155/65R13	73T
	155/65R14	75T
	165/65R14	79T
	165/65R15	81T
	175/65R14	82T
<b>70</b>	175/65R14 XL	86T
	175/65R15	84T
	185/65R14	86T
	185/65R15	88T
	195/65R15	91T
	195/65R15	91H
	195/65R15 XL	95T
	205/65R15	94T
	215/65R16	98H
	235/65R17 XL	108H
<b>75</b>	145/70R13	71T
	155/70R13	75T
	165/70R13	79T
	165/70R14	81T
	175/70R13	82T
	175/70R14	84T
<b>80</b>	175/70R14 XL	88T
	185/70R14	88T
	215/70R16	100T

## F FIT Van

	Size	LI and SS
<b>60</b>	195/60R16	99/97T
	195/65R16	104/102T
<b>65</b>	205/65R16	107/105T
	215/65R16	109/107T
	225/65R16	112/110R
	235/65R16	115/113R
	195/70R15	104/102R
<b>70</b>	215/70R15	109/107R
	225/70R15	112/110R
	195/75R16	107/105R
	205/75R16	110/108R
<b>75</b>	215/75R16	113/111R
	185R14	102/100R
	195R14	106/104Q



## S FIT EQ



Wet

Dry

Fuel efficiency

The S FIT EQ is designed for drivers looking for safe and efficient driving in wet and dry conditions.

### Tyre Features

Advanced asymmetric tread design

Streamlined tread design

New hybrid compound

Special rubber layer

### Driver Benefits

Optimised wet and dry performance

Highly efficient drainage and increased grip

Reduces rotational resistance and increases tyre life

Maximises fuel efficiency

**B~E / B~C / W2**



	Size	Material	LI / SS	Label			
				RR	Wet grip	Wave (dB)	
<b>35</b>	225/35R19 XL	1018189	88Y	C	C	2 (72dB)	
	235/35R19 XL	1018041	91Y	C	C	2 (72dB)	
	255/35R18 XL	1018039	94Y	E	C	2 (73dB)	
	245/35R18 XL	1023935	93Y	E	B	2 (72dB)	
	245/35R20 XL	1023936	95Y	E	B	2 (72dB)	
	255/35R19 XL	1018011	96Y	E	C	2 (73dB)	
	255/35R20 XL	1023937	97Y	E	C	2 (73dB)	
	265/35R18 XL	1023932	97Y	E	B	2 (73dB)	
<b>40</b>	205/40R17 XL	1020952	84W	E	C	2 (72dB)	
	215/40R17 XL	1020956	87W	E	C	2 (72dB)	
	245/40R17 XL	1023931	95Y	E	B	2 (71dB)	
	225/40R18 XL	1016748	92Y	E	B	2 (71dB)	
	235/40R18 XL	1018037	95Y	C	C	2 (72dB)	
	235/40R19 XL	1023934	96Y	E	C	2 (72dB)	
	245/40R18 XL	1018009	97Y	C	C	2 (72dB)	
	245/40R19 XL	1018185	98Y	C	C	2 (72dB)	
	255/40R19 XL	1021147	100Y	C	C	2 (73dB)	
	<b>45</b>	195/45R15	1021159	78V	E	C	2 (71dB)
195/45R16 XL		1018007	84V	E	C	2 (72dB)	
205/45R16		1018235	83V	E	C	2 (71dB)	
205/45R16		1017991	83W	E	C	2 (71dB)	
205/45R17 XL		1018029	88W	C	C	2 (72dB)	
215/45R17 XL		1018215	91Y	C	C	2 (72dB)	
225/45R17 XL		1017985	94Y	E	C	2 (72dB)	
225/45R18 XL		1018201	95Y	E	C	2 (72dB)	
235/45R17 XL		1017995	97Y	C	C	2 (72dB)	
235/45R18 XL		1021142	98Y	E	C	2 (72dB)	
245/45R17 XL		1018035	99Y	E	C	2 (72dB)	
245/45R18 XL		1018013	100Y	C	C	2 (72dB)	
245/45R18 XL		1026480	100Y	C	B	2 (72dB)	
245/45R19 XL		1023933	102Y	C	B	2 (72dB)	
<b>50</b>		185/50R16	1021158	81V	E	C	2 (70dB)
		195/50R15	1018239	82H	E	C	2 (71dB)
	195/50R15	1017947	82V	E	C	2 (71dB)	
	195/50R16	1018237	84V	E	C	2 (71dB)	
	205/50R16	1018021	87V	C	C	2 (71dB)	
	205/50R16	1018231	87W	C	C	2 (71dB)	
	205/50R17 XL	1017969	93W	C	C	2 (72dB)	
	215/50R17 XL	1017993	95W	C	C	2 (72dB)	
	225/50R17 XL	1018001	98Y	C	C	2 (72dB)	
	<b>55</b>	185/55R15	1022728	82H	E	C	2 (70dB)
185/55R15		1022727	82V	E	C	2 (70dB)	
185/55R16		1021157	83V	E	C	2 (70dB)	
195/55R15		1017987	85H	C	C	2 (71dB)	
195/55R15		1017957	85V	C	C	2 (71dB)	
195/55R16		1017997	87H	C	C	2 (71dB)	
195/55R16		1017961	87V	C	C	2 (71dB)	

	Size	Material	LI / SS	Label			
				RR	Wet grip	Wave (dB)	
	205/55R16	1017951	91H	C	C	2 (71dB)	
	205/55R16	1017945	91V	C	C	2 (71dB)	
	205/55R16 XL	1018005	94V	C	C	2 (72dB)	
	205/55R16	1017967	91W	C	C	2 (71dB)	
	215/55R16 XL	1020957	97H	C	C	2 (72dB)	
	215/55R16	1017973	93V	C	C	2 (71dB)	
	215/55R16 XL	1017971	97W	C	C	2 (72dB)	
	205/55R17 XL	1023930	95W	E	B	2 (72dB)	
	215/55R17 XL	1020958	98W	C	C	2 (72dB)	
	215/55R18 XL	1021139	99V	C	C	2 (72dB)	
	225/55R16	1018019	95V	C	C	2 (72dB)	
	225/55R17 XL	1018017	99W	C	C	2 (72dB)	
	225/55R17 XL	1018025	101W	C	C	2 (72dB)	
	<b>60</b>	195/60R15	1017949	88H	E	C	2 (71dB)
		195/60R15	1017965	88V	E	C	2 (71dB)
205/60R15		1017977	91H	C	C	2 (71dB)	
205/60R15		1018003	91V	C	C	2 (71dB)	
205/60R16		1018227	92V	C	C	2 (71dB)	
205/60R16 XL		1021138	96V	C	C	2 (72dB)	
215/60R16 XL		1017989	99H	C	C	2 (72dB)	
<b>65</b>	195/65R15	1017953	91V	C	C	2 (71dB)	
	205/65R15	1017963	94H	C	C	2 (71dB)	

## Runflat

	Size	Material	LI / SS	Label		
				RR	Wet grip	Wave (dB)
<b>40</b>	225/40R18	1026235	95W	C	B	2 (72dB)
<b>45</b>	225/45R17	1026231	91W	E	B	2 (71dB)
	225/45R18 XL	1026234	95W	C	B	2 (72dB)
	245/45R18	1026232	96W	E	B	2 (71dB)
<b>50</b>	225/50R17	1026230	94W	E	B	2 (71dB)
	245/50R18	1026233	100W	C	B	2 (71dB)
<b>55</b>	225/55R16	1026228	95W	E	B	2 (71dB)
	225/55R17	1026229	97W	E	B	2 (71dB)



## SUV

	Size	Material	LI / SS	Label		
				RR	Wet grip	Wave (dB)
40	275/40R20 XL	1023946	106Y	E	C	2 (73dB)
45	255/45R18 XL	1023940	103Y	E	B	2 (73dB)
	255/45R20 XL	1023944	105W	E	A	2 (73dB)
	275/45R20 XL	1023945	110Y	E	A	2 (73dB)
50	235/50R18	1021143	97V	E	C	2 (71dB)
	235/50R19	1023943	99V	C	B	2 (71dB)
	255/50R19 XL	1021149	107W	C	C	2 (73dB)
55	225/55R18	1023939	98V	E	B	2 (71dB)
	235/55R17 XL	1023938	103W	C	B	2 (72dB)
	235/55R18	1021144	100V	C	C	2 (71dB)
	235/55R19 XL	1023941	105W	C	B	2 (72dB)
	255/55R18 XL	1021148	109W	C	C	2 (73dB)
	255/55R19 XL	1023942	111W	C	V	2 (73dB)
60	225/60R17	1021140	99H	E	C	2 (71dB)
	225/60R18	1021141	100H	C	C	2 (71dB)
	235/60R18 XL	1018197	107V	C	C	2 (72dB)
65	235/65R17 XL	1018023	108V	B	C	2 (72dB)
	255/65R17	1021150	110H	E	C	2 (72dB)
65	215/70R16	1021156	100V	E	C	2 (71dB)
	225/70R16	1021155	103V	C	C	2 (71dB)
	245/70R16 XL	1021153	111H	C	C	2 (72dB)

### Performance Information



## SUV Runflat

	Size	Material	LI / SS	Label		
				RR	Wet grip	Wave (dB)
50	255/50R19 XL	1026227	107W	C	B	2 (73dB)

\* DSB : Diagonal serrated band / SBL : Serrated black letter

\* LI : Load index / SS : Speed symbol / RR : Rolling resistance / dB : Decibel / PR: Ply rating / ST: Sidewall type / MR: Measuring rim / OD: Overall diameter / SW: Section width / TW: Tread width / TD: Tread depth / RPM: Revolution per mile / RPB: Rim protector bar



## **G FIT EQ**



Wet

Wear life

Dry

The G FIT EQ provides drivers with better wet handling, braking and fuel efficiency.

<b>Tyre Features</b>	<b>Driver Benefits</b>
Asymmetric tread design	Optimised wet and dry performance
Lateral grooves	Greater stability and handling performance on wet roads
Optimised kerf depth	Improves driving performance and provides a comfortable ride
New hybrid compound	Reduces rotational resistance and increases tyre life

**C~F / C~E / W2**





	Size	Material	LI /SS	Label		
				RR	Wet grip	Wave (dB)
<b>55</b>	185/55R14	1019123	80H	E	C	2 (70dB)
<b>60</b>	165/60R14	1021165	75T	E	E	2 (70dB)
	165/60R14	1019305	75H	E	E	2 (70dB)
	175/60R15	1021160	81H	E	E	2 (70dB)
	185/60R14	1019121	82H	E	C	2 (70dB)
	185/60R15	1019107	84H	E	C	2 (70dB)
	185/60R15 XL	1019105	88H	E	C	2 (71dB)
<b>65</b>	155/65R13	1019151	73T	E	E	2 (70dB)
	155/65R14	1019135	75T	E	E	2 (70dB)
	165/65R13	1019145	77T	E	E	2 (70dB)
	165/65R14	1019133	79T	E	E	2 (70dB)
	165/65R15	1019301	81H	E	E	2 (70dB)
	175/65R13	1019139	80T	E	E	2 (70dB)
	175/65R14	1019129	82T	E	E	2 (70dB)
	175/65R14 XL	1019127	86T	C	E	2 (71dB)
	175/65R14	1019303	82H	E	E	2 (70dB)
	175/65R15	1019111	84T	E	E	2 (70dB)
	175/65R15	1019109	84H	E	E	2 (70dB)
	185/65R14	1019115	86T	C	C	2 (70dB)
	185/65R14	1019117	86H	C	C	2 (70dB)
	185/65R15	1019101	88T	E	C	2 (70dB)
	185/65R15	1019103	88H	E	C	2 (70dB)
195/65R15	1019097	91T	C	C	2 (71dB)	
195/65R15 XL	1019095	95T	C	C	2 (72dB)	
195/65R15	1019099	91H	C	C	2 (71dB)	
<b>70</b>	155/70R13	1019149	75T	E	E	2 (70dB)
	165/70R13	1019143	79T	E	E	2 (70dB)
	165/70R14	1019131	81T	E	E	2 (70dB)
	165/70R14 XL	1021164	85T	E	E	2 (71dB)
	175/70R13	1019137	82T	E	E	2 (70dB)
	175/70R14	1021163	84T	E	E	2 (70dB)
	175/70R14 XL	1019125	88T	E	E	2 (71dB)
	185/70R14	1019113	88T	C	E	2 (70dB)
	195/70R14	1021161	91T	C	E	2 (71dB)
	205/70R15	1019299	96T	C	E	2 (71dB)
<b>80</b>	145/80R13 XL	1021629	79T	E	E	2 (71dB)
	155/80R13	1019147	79T	E	E	2 (70dB)
	165/80R13	1019141	83T	E	E	2 (70dB)
	175/80R14	1021162	88T	E	E	2 (70dB)

## SUV

	Size	Material	LI /SS	Label		
				RR	Wet grip	Wave (dB)
<b>60</b>	215/60R17	1019089	96H	E	C	2 (71dB)
	235/60R16	1019091	100H	C	C	2 (71dB)
<b>65</b>	215/65R16	1019093	98H	E	C	2 (71dB)
	225/65R17	1019087	102H	C	C	2 (71dB)

\* DSB : Diagonal serrated band

\* LI : Load index / SS : Speed symbol / RR : Rolling resistance / dB : Decibel / PR: Ply rating / ST: Sidewall type / MR: Measuring rim / OD: Overall diameter / SW: Section width / TW: Tread width / TD: Tread depth / RPM: Revolution per mile / RPB: Rim protector bar

### Performance Information





## ***X FIT VAN***



Handling

Braking

Durability

The X FIT VAN provides drivers with impressive handling and braking, in both the wet and the dry, as well as durability and increased mileage.

### **Tyre Features**

Wide lateral grooves

The RCS construction

Longer mileage tread compound

Squared foot design

### **Driver Benefits**

Greater stability and handling performance on wet roads

Sustains heavier vehicle loads

Longer tread life

Maximised fuel efficiency

**C~E / B~C / W2**



	Size	Material	LI / SS	Label		
				RR	Wet grip	Wave (dB)
<b>60</b>	195/60R16	2020414	99/97H	E	B	1 (68dB)
	215/60R16	2020412	103/101T	C	B	1 (68dB)
<b>65</b>	175/65R14	2020400	90/88T	E	C	1 (67dB)
	195/65R16	2020386	104/102R	E	C	1 (67dB)
	205/65R15	2020418	102/100T	E	C	1 (67dB)
	205/65R16	2020382	107/105T	E	C	1 (67dB)
	215/65R16	2020410	109/107T	C	B	1 (67dB)
	225/65R16	2020376	112/110R	C	B	1 (67dB)
	235/65R16	2020372	115/113R	C	B	1 (67dB)
	<b>70</b>	165/70R14	2020420	89/87R	E	B
195/70R15		2020394	104/102R	E	C	1 (67dB)
205/70R15		2020416	106/104R	E	C	1 (67dB)
215/70R15		2020392	109/107S	C	C	1 (67dB)
225/70R15		2020390	112/110S	C	C	1 (67dB)
<b>75</b>	185/75R16	2020388	104/102R	E	C	1 (67dB)
	195/75R16	2020384	107/105R	E	C	1 (67dB)
	205/75R16	2020380	113/111R	C	C	1 (67dB)
	215/75R16	2020378	116/114R	C	C	1 (67dB)
	225/75R16	2020408	121/120R	C	C	1 (67dB)
<b>82</b>	185R14	2020398	102/100R	E	C	1 (67dB)
	195R14	2020396	106/104R	C	C	1 (67dB)

\* DSB : Diagonal serrated band

\* LI : Load index / SS : Speed symbol / RR : Rolling resistance / dB : Decibel / PR: Ply rating / ST: Sidewall type / MR: Measuring rim / OD: Overall diameter / SW: Section width / TW: Tread width / TD: Tread depth / RPM: Revolution per mile / RPB: Rim protector bar

## Performance Information





## X FIT HT



Handling



Noise



Wear life

The X FIT HT provides SUV and light truck drivers with excellent on-road handling performance and a reliable, comfortable drive all year round.

### Tyre Features

Highly stiff centre tread block

Zigzag groove design

2-Step edged block

Reinforced Carcass

### Driver Benefits

Enhances handling performance and ensures better road-holding

Increases vehicle traction in dry, wet and snowy conditions

Helps ensure a longer tread and wear life by keeping the tyre safe

Improves steering feedback and stability, whilst ensuring a low noise and comfortable ride

**C~E / B~E / W2**



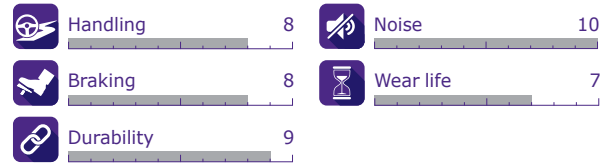
# X FIT HT SUV

	Size	Material	LI / SS	Label		
				RR	Wet grip	Wave (dB)
<b>75</b>	225/75R16	1019692	104T	E	E	2 (71dB)
<b>70</b>	215/70R16	1019688	100H	E	E	2 (71dB)
	245/70R16	1019694	107T	E	E	2 (71dB)
	265/70R17	1016781	115T	E	E	2 (72dB)
<b>65</b>	225/65R17	1017233	102T	E	E	2 (71dB)
<b>60</b>	265/60R18	1019700	110V	E	E	2 (72dB)

\* DSB : Diagonal serrated band

\* LI : Load index / SS : Speed symbol / RR : Rolling resistance / dB : Decibel / PR: Ply rating /  
ST: Sidewall type / MR: Measuring rim / OD: Overall diameter / SW: Section width /  
TW: Tread width / TD: Tread depth / RPM: Revolution per mile / RPB: Rim protector bar

## Performance Information







## I FIT



Wet



Snow



Braking



Traction



M+S

The I FIT provides drivers with a comfortable and competent driving performance in snowy and wet road conditions.

### Tyre Features

Aqua slush edge grooves

Winter compound

Increased pitch numbers & increased groove edge length

3D winter sipe

### Driver Benefits

Optimised profile and an effective lateral groove form

Ultimate performance on wet and snowy winter roads

Improves the snow performance of the tyres

Minimising block movement on wet and snowy roads

C~E / C / W2





	Size	Material	LI / SS	Label		
				RR	Wet grip	Wave (dB)
40	225/40R18 XL	1019773	92V	E	C	2 (72dB)
	245/40R18 XL	1019777	97V	E	C	2 (72dB)
45	225/45R17	1019767	91H	E	C	2 (72dB)
	225/45R17 XL	1019768	94V	E	C	2 (72dB)
	225/45R18 XL	1019774	95V	E	C	2 (72dB)
	235/45R18 XL	1019775	98V	E	C	2 (72dB)
	245/45R18 XL	1019778	100V	E	C	2 (72dB)
50	195/50R15	1019743	82H	F	C	2 (72dB)
	205/50R17 XL	1019764	93V	E	C	2 (72dB)
	215/50R17 XL	1019765	95V	E	C	2 (72dB)
	225/50R17 XL	1019769	98H	E	C	2 (72dB)
	225/50R17 XL	1019770	98V	E	C	2 (72dB)
55	185/55R15	1019739	82T	E	C	2 (71dB)
	195/55R15	1019744	85H	E	C	2 (72dB)
	195/55R16	1019750	87H	E	C	2 (72dB)
	205/55R16	1019753	91T	C	C	2 (72dB)
	205/55R16	1019751	91H	C	C	2 (72dB)
	205/55R16 XL	1019752	94H	C	C	2 (72dB)
	215/55R16	1019756	93H	E	C	2 (72dB)
	215/55R16 XL	1019757	97H	E	C	2 (72dB)
	215/55R17 XL	1019766	98V	E	C	2 (72dB)
	225/55R16	1019761	95H	E	C	2 (72dB)
	225/55R16 XL	1019762	99H	E	C	2 (72dB)
	225/55R17 XL	1019771	101V	E	C	2 (72dB)
	60	185/60R14	1019734	82T	E	C
185/60R15		1019740	84T	E	C	2 (71dB)
185/60R15 XL		1019741	88T	E	C	2 (71dB)
195/60R15		1019745	88T	E	C	2 (72dB)
205/60R16		1019754	92H	E	C	2 (72dB)
205/60R16 XL		1019755	96H	E	C	2 (72dB)
215/60R16 XL		1019758	99H	C	C	2 (72dB)
225/60R16		1019763	98H	E	C	2 (72dB)
235/60R18 XL		1019776	107H	C	C	2 (72dB)
65	155/65R13	1019722	73T	F	C	2 (71dB)
	155/65R14	1019727	75T	E	C	2 (71dB)
	165/65R14	1019728	79T	F	C	2 (71dB)
	165/65R15	1019737	81T	E	C	2 (71dB)
	175/65R14	1019730	82T	E	C	2 (71dB)
	175/65R14 XL	1019731	86T	E	C	2 (71dB)
	175/65R15	1019738	84T	E	C	2 (71dB)
	185/65R14	1019735	86T	E	C	2 (71dB)
	185/65R15	1019742	88T	E	C	2 (71dB)
	195/65R15	1019747	91T	E	C	2 (72dB)

	Size	Material	LI / SS	Label		
				RR	Wet grip	Wave (dB)
65	195/65R15	1019746	91H	E	C	2 (72dB)
	195/65R15 XL	1019748	95T	C	C	2 (72dB)
	205/65R15	1019749	94T	E	C	2 (72dB)
	215/65R16	1019759	98H	C	C	2 (72dB)
70	235/65R17 XL	1019772	108H	C	C	2 (72dB)
	145/70R13	1019721	71T	F	C	2 (71dB)
	155/70R13	1019723	75T	F	C	2 (71dB)
	165/70R13	1019725	79T	E	C	2 (71dB)
	165/70R14	1019729	81T	E	C	2 (71dB)
	175/70R13	1019726	82T	E	C	2 (71dB)
	175/70R14	1019732	84T	E	C	2 (71dB)
	175/70R14 XL	1019733	88T	E	C	2 (71dB)
	185/70R14	1019736	88T	E	C	2 (71dB)
	215/70R16	1019760	100T	E	C	2 (72dB)
80	155/80R13	1019724	7v9T	E	C	2 (71dB)

\* DSB : Diagonal serrated band

\* LI : Load index / SS : Speed symbol / RR : Rolling resistance / dB : Decibel / PR: Ply rating / ST: Sidewall type / MR: Measuring rim / OD: Overall diameter / SW: Section width / TW: Tread width / TD: Tread depth / RPM: Revolution per mile / RPB: Rim protector bar

### Performance Information





## **I FIT VAN**



Wet



Snow



Durability



Fuel efficiency



M+S

The I FIT Van provides drivers with superb braking, durability and better fuel efficiency in wet and snowy conditions.

### **Tyre Features**

Safety by braking performance

Durable contact patch tech

3D winter sipe

3-Channel wide groove

**B~E / B~C / W2**

### **Driver Benefits**

Enhanced safety by improving wet braking performance

Improves durability by maintaining even pressure

Movement ensures maximum steering stability

Enhances stability even during powerful driving

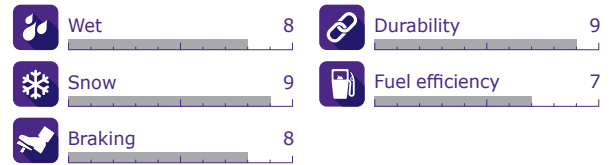


	Size	Material	LI / SS	Label		
				RR	Wet grip	Wave (dB)
<b>60</b>	195/60R16	2020743	99/97T	E	C	2 (72dB)
<b>65</b>	195/65R16	2020744	104/102T	E	C	2 (72dB)
	205/65R16	2020746	107/105T	E	C	2 (72dB)
	215/65R16	2020725	109/107T	E	C	2 (72dB)
	225/65R16	2020748	112/110R	E	C	2 (72dB)
	235/65R16	2020749	115/113R	E	C	2 (72dB)
<b>70</b>	195/70R15	2020721	104/102R	E	C	2 (72dB)
	215/70R15	2020724	109/107R	E	C	2 (72dB)
	225/70R15	2020723	112/110R	E	C	2 (72dB)
<b>75</b>	195/75R16	2020727	107/105R	E	C	2 (72dB)
	205/75R16	2020747	110/108R	E	C	2 (72dB)
	215/75R16	2020722	113/111R	E	C	2 (72dB)
<b>82</b>	185R14	2020742	102/100R	E	C	2 (72dB)
	195R14	2020745	106/104Q	E	C	2 (72dB)

\* DSB : Diagonal serrated band

\* LI : Load index / SS : Speed symbol / RR : Rolling resistance / dB : Decibel / PR: Ply rating /  
ST: Sidewall type / MR: Measuring rim / OD: Overall diameter / SW: Section width /  
TW: Tread width / TD: Tread depth / RPM: Revolution per mile / RPB: Rim protector bar

## Performance Information



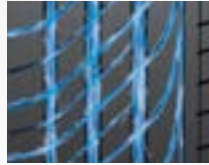
# Laufenn Technology



Wet

## Positive Aqua Hydro Block

An advanced aqua hydro block design was developed through a 3D hydroplaning simulation to provide highly efficient wet braking.



## Streamlined Kerfs and Sipes

Streamlined kerfs and sipes provide highly efficient drainage in wet conditions.

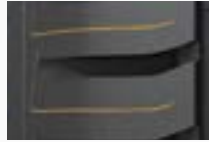
**S FIT EQ**



Wet

## Inside Kerfs

The asymmetric patterns of the inside kerf design enhances handling performance and cornering stability on wet roads.



**G FIT EQ**



Wet

## Central Grooved Sipes

The central grooved sipes allow for faster water drainage which improves overall performance.



**G FIT EQ**



Wet

## New 3D Lateral Groove

Enhances wet performance without sacrificing block strength.



**X FIT VAN**



Wet

## Increased Void Volume

Improves snow grip and reduces hydroplaning by optimising the contact area.



LAUFENN

Standard tyre



Wet

## Aqua Slush Edged Grooves

Compared to the existing product, a lateral groove focused design provides maximised lateral grip. This prevents hydroplaning by effectively pushing out water in a side direction on the wet road, this is performed through an optimised profile and an effective lateral groove formation.



Handling

## 4 Channel Rib Type Design

4 straight groove design improves stability on wet road surfaces.

**S FIT EQ | G FIT EQ | X FIT VAN**



Handling

## Handling Performance

Even loads transfer vertically and laterally which helps maintain a stable foot shape through an optimal design, based on a multiple tread radius profile and equilibrium carcass line.

**S FIT EQ**



Traction force at driving



Traction force at cornering

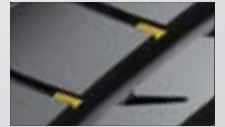


Handling

## Tie Bar

Application of the tie bar technology ensures optimal block stiffness.

**S FIT EQ | G FIT EQ**



Handling

## Half-Depth Lateral Groove

The differentiated groove depth reinforces both inner and outer block stiffness, leading to enhanced cornering and handling stability.



**G FIT EQ**

# Laufenn Technology



Handling

## Belt Edge Tape

A folded belt edge tape design is incorporated between the tyres. There is two tread belts to improve handling performance during powerful driving.



**G FIT EQ | X FIT VAN**



LAUFENN

Standard tyre



Handling

## Sipe

The design's minimised block movement ensures maximum steering stability.



**X FIT VAN**



Handling

## Zigzag Diamond Groove

The 3D diamond cut block edge ensures excellent traction and enhances optimal handling by supporting blocks when cornering.



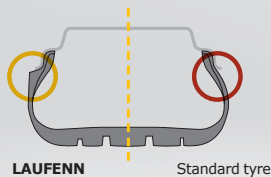
**X FIT VAN**



Handling

## Cornering Stiffness

Reinforced sidewall and bead section leads to a direct steering response, whilst improving the cornering force according to the weight shift.



LAUFENN

Standard tyre



Braking

## Drainage Induced Groove Edge

Drainage induced groove edges help to optimise efficient wet braking.



**S FIT EQ**



Braking

## Asymmetric Pattern Design

Without cut kerfs the designed pattern reinforces the outside block stiffness which in turn enhances cornering stability.

**S FIT EQ | G FIT EQ**



Braking

## Safety in Braking Performance

Enhanced safety by improving wet braking performance.

**X FIT VAN**



Fuel efficiency

## Special Rubber Layer

The tread pattern and special rubber structure minimises rotational resistance whilst maximising fuel efficiency.



**S FIT EQ | G FIT EQ**

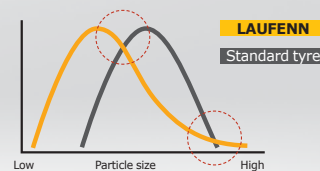


Fuel efficiency

## Longer Mileage Carbon Compound

A smaller carbon compound found in existing materials greatly reduces energy dispersion.

**X FIT VAN**





# Laufenn Technology

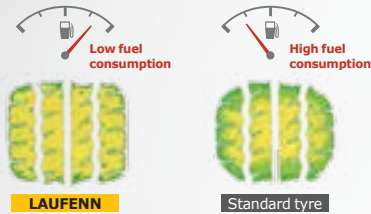


Fuel efficiency

## Mileage and Fuel Efficiency

The squared foot design ensures more tyre-road contact and greater fuel mileage.

**X FIT VAN**



Noise

## Cornering and Noise Reduction Rib

A straight rib block applied to the outside of the tyre helps prevent road noise and increases cornering grip.



**S FIT EQ**

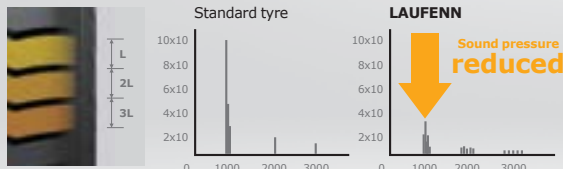


Noise

## Optimised Stiffness Distribution Design

An optimised three variable pitch stiffness and distributed tread block design ensures minimum vibration and noise as well as improved riding comfort.

**G FIT EQ**

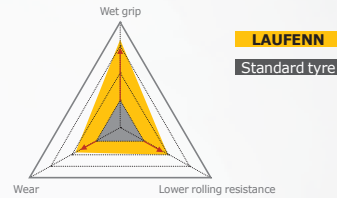


Wear life

## New Hybrid Compound

The use of high performance polymer compounds easily handle 3-dimensional movement, reduces rotational resistance and increases tyre life.

**S FIT EQ | G FIT EQ**



Wear life

## Improved Mileage and Even Tread Wear

An optimised tyre profile designed by an advanced computer-aided simulation improves braking performance and wear by evenly distributing weight over the tyre's contact patch.

**S FIT EQ | G FIT EQ**

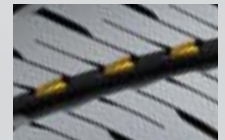


Wear life

## 2-Step Block

The design reinforces the centre block stiffness and improves traction.

**X FIT VAN**





# Laufenn Technology



Durability

## The RCS Construction

The special rubber material enhances structural coherence and improves durability and stability, essential factors to sustaining heavier vehicle loads.

**X FIT VAN**



Durability

## Durable Contact Patch Technology

The optimal block and groove width design improves durability by maintaining even pressure.

**X FIT VAN**



Ice

## Ice Grip Slits

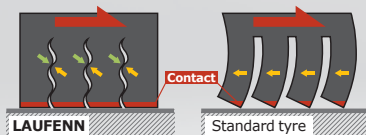
Provides improved cornering performance with the internal sub-grooves.



Snow

## 3D Winter Sipes

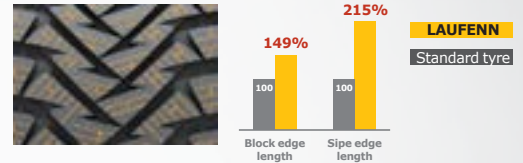
Ensures optimal winter performance and enhanced driving stability by minimising block movement on wet and snowy roads.



Snow

## Increased Pitch Numbers and Increased Groove Edge Length

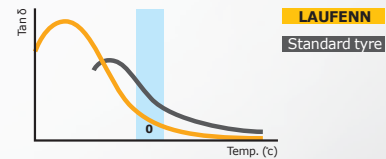
Helps effectively bite in to the snow and improve the traction performance of the tyres.



Snow

## Winter Compound

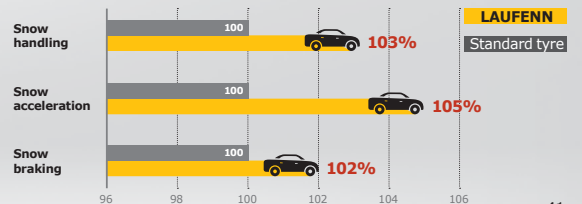
The application of a new winter rubber compound with improved low temperature performance enhances grip for competent winter driving.



Snow

## Snow Traction Performance

A snow traction simulation tool was used to design an optimised pattern for enhanced performance in snowy conditions.



# Useful Information

## Load Index and Speed Symbol

The symbol that shows a tyre's performance level consists of two parts: The performance is marked by load index (LI) and speed symbol (SS). LI refers to the maximum load that one tyre can support and SS refers to the maximum speed that a tyre can handle.

### 1) Load Index

Load index is a numerical code stipulating the maximum load each tyre can carry. For example if the load index is 100, a tyre can carry a load up to 800kg.

<b>LI</b>	61	62	63	64	65	66	67	68	69	70
<b>KG</b>	257	265	272	280	290	300	307	315	325	335
<b>LI</b>	71	72	73	74	75	76	77	78	79	80
<b>KG</b>	345	355	365	375	387	400	412	425	437	450
<b>LI</b>	81	82	83	84	85	86	87	88	89	90
<b>KG</b>	462	475	487	500	515	530	545	560	580	600
<b>LI</b>	91	92	93	94	95	96	97	98	99	100
<b>KG</b>	615	630	650	670	690	710	730	750	775	800
<b>LI</b>	101	102	103	104	105	106	107	108	109	110
<b>KG</b>	825	850	875	900	925	950	975	1000	1030	1060

### 2) Speed Symbol

Speed Symbol indicates the speed at which the tyre can carry a load corresponding to its load index under service conditions specified by the tyre manufacturer.

Speed Rating					
Code	km/h	mph	Code	km/h	mph
<b>A1</b>	5	3	<b>L</b>	120	75
<b>A2</b>	10	6	<b>M</b>	130	81
<b>A3</b>	15	9	<b>N</b>	140	87
<b>A4</b>	20	12	<b>P</b>	150	94
<b>A5</b>	25	16	<b>Q</b>	160	99
<b>A6</b>	30	19	<b>R</b>	170	106
<b>A7</b>	35	22	<b>S</b>	180	112
<b>A8</b>	40	25	<b>T</b>	190	118
<b>B</b>	50	31	<b>U</b>	200	124
<b>C</b>	60	37	<b>H</b>	210	130
<b>D</b>	65	40	<b>V</b>	240	149
<b>E</b>	70	43	<b>Z</b>	over 240	over 149
<b>F</b>	80	50	<b>W</b>	270	168
<b>G</b>	90	56	<b>(W)</b>	over 270	over 168
<b>J</b>	100	62	<b>Y</b>	300	186
<b>K</b>	110	68	<b>(Y)</b>	over 300	over 186

## Tyre Pressure

The tyre inflation pressure is directly related to safety meaning that tyre pressure must be checked regularly as correct maintenance can prolong the lifespan of the tyres.

### Importance of Tyre Pressures

Optimum air pressure should be maintained to ensure safety, driving performance, tyre life and fuel cost. Tyres have been known to lose up to one pound per square inch (psi) every month, therefore it is important to check tyres, including the spare at least once a month or before a long trip. The recommended interval for tyres to be checked is one month.

## Maintenance

Tyre wear directly affects the driver's safety and the performance of the vehicle. It is essential for the driver to be well-informed about how to check for tyre wear regularly.

### Importance of Checking For Tyre Wear

The deeper the groove, which is on the surface of the tyre, the more grip a tyre will have. You can prevent danger and unexpected accidents by checking for tyre wear on a regular basis.

### Recommended Interval Between Check-Ups

Laufenn recommends that you check for tyre wear once each month. It is also important to check your tyres after and before long distance driving.

### Checking for Tyre Wear with Tyre Tread Wear Indicators

You can check the depth of the groove by using a tyre tread depth gauge or by observing the tread wear indicator on the side of the tyre. To ensure optimum safety and performance, tyres should be replaced when the tyre groove wears below 2 to 3mm.

# Useful Information

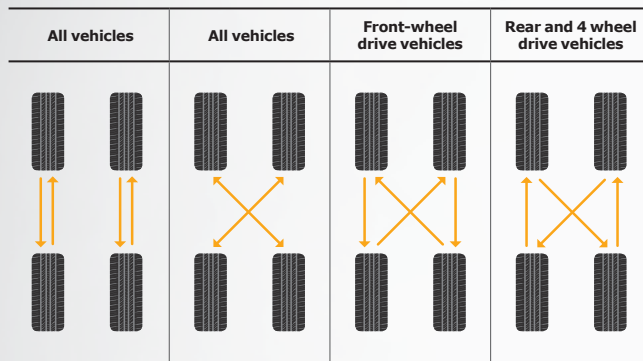
## Rotation

Periodic rotation prevents uneven wear prolonging the life of your tyres.

### The Importance of Tyre Rotation

Periodic tyre rotation helps extend the life of your tyres and improves performance levels. For safe driving and cost effective solutions please refer to the rotation method below.

#### Four Tyre Rotation



## Balance

Tyre balance must be checked if there is unexpected vibration or noise from a tyre.

### The Importance of Tyre Balance

Tyre balancing is a process of compensating for the weight of the tyre and wheel after assembly. If not properly balanced vibration is increased and can cause stress on your vehicle.

### When to Inspect for Tyre Balance

If you feel vibration from a tyre, visit a mechanic where they will attach a balancing weight to the exterior or interior of the wheel to counteract centrifugal forces acting on the heavy areas when the wheel is turning.

### How to Balance the Tyre and Wheel

To balance the tyre and wheel assembly, a balance weight can be used when a certain spot is lighter or heavier than it should be.

## Wheel Alignment

To prevent vibration, skidding, noise and wear, wheel alignment inspection is necessary.

### The Importance of Wheel Alignment

The purpose of wheel alignment is to adjust front-wheel handling whilst driving. If wheel alignment is off, tyre life is shortened whilst car and mileage performance is also decreased.

### When to Check Wheel Alignment

Laufenn recommends inspecting wheel alignment every year or for every 20,000km driven. The inspection is required:

- After a car accident.
- After a tyre replacement.
- When there is uneven wear on a shoulder.
- When the steering wheel is unstable and/or vibrating.
- When riding is uncomfortable or fuel efficiency is decreased.

## Replacement

In order to ensure a safe and comfortable ride it is strongly recommended that all drivers know when and how to replace tyres.

### The Importance of Tyre Replacement

Timely replacement of the tyre is critical for driver safety and also influences vehicle lifespan and performance.

### When to Replace a Tyre:

- In the case of severe tyre erosion.
- In the case a repair is impossible due to a tyre puncture.

### How to Replace a Tyre:

In the case of a damaged tyre and wheel a professional consultation is recommended. Tyre replacement should only be carried out by a trained and highly experienced technician:

1. Remove the tyre and wheel from the vehicle.
2. After separating the tyre and wheel, replace with a new tyre.
3. Check tyre balance.
4. Install the newly fitted tyre and wheel on a vehicle.

### Tips for Tyre Replacement:

It is best to replace two tyres on one axle at the same time.

Only replacements of one or two tyres on the same axle usually cause the vehicle to unbalance.